

Import, Create Configurator File

Specific Configurations Used in this Guide

- These instructions pertain to configurations for 3-speed fan coil units with normally open hot and cold water valves.
- This configuration will include an EcoContact+ door contact, used in the “*Lanai*” setting (i.e. the EcoContact+ will be installed on the patio door, which, when left open will shut down the HVAC).
- This configuration will include an EcoContact+ door contact, used in the “*Occupancy*” setting (i.e. the EcoContact+ will be installed on the main entry door as a supplemental occupancy sensor).

Notes:

- A configurator file contains your thermostat profile details.
- These instructions assume some previous knowledge of EcoSmart Serial Utility.
- We recommend loading the configurator file onto the thermostats prior to installing the thermostats.
- Loading your profiles on to your thermostats must be done prior to joining and binding them.

You Will Need:

- Laptop with ESU loaded
- EcoSmart serial cable
- Your Profile preferences (creating configurator file only)

Import Configurator File

1. Telkonet will email you the configurator file.
2. Download the configurator file.
3. Connect your laptop to the thermostat using the dedicated serial cable.
4. Open ESU.
5. Navigate to the **Profiles** tab.
6. Select the **Manual Configurator** button (Figure 1).

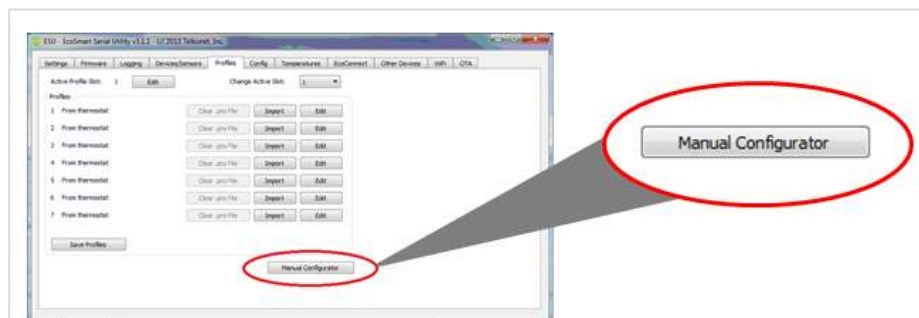


Figure 1

7. Select **Import** (Figure 2).

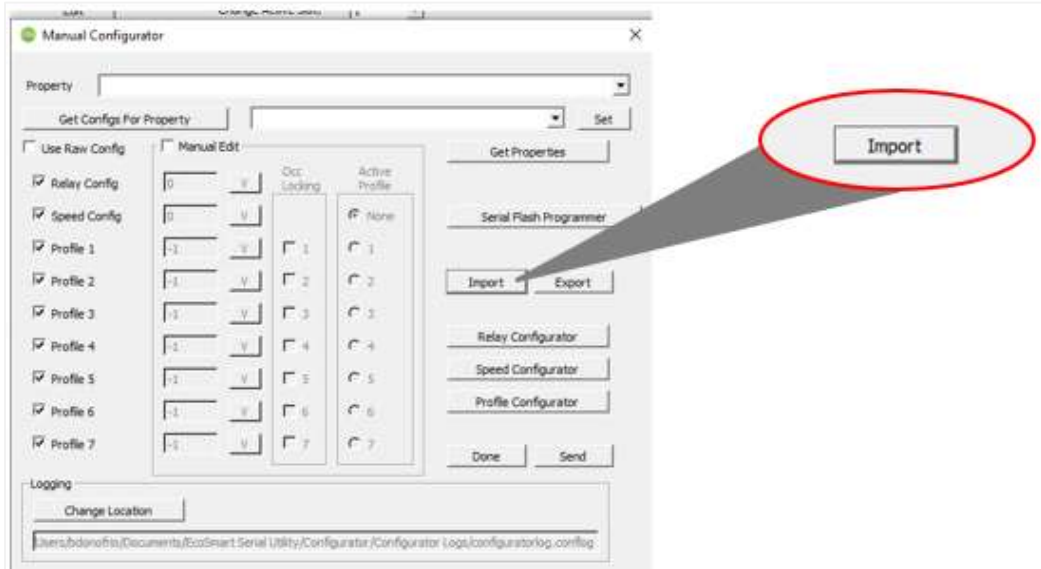


Figure 2

8. Select the configurator file you just downloaded, then click **Open** (Figure 3).

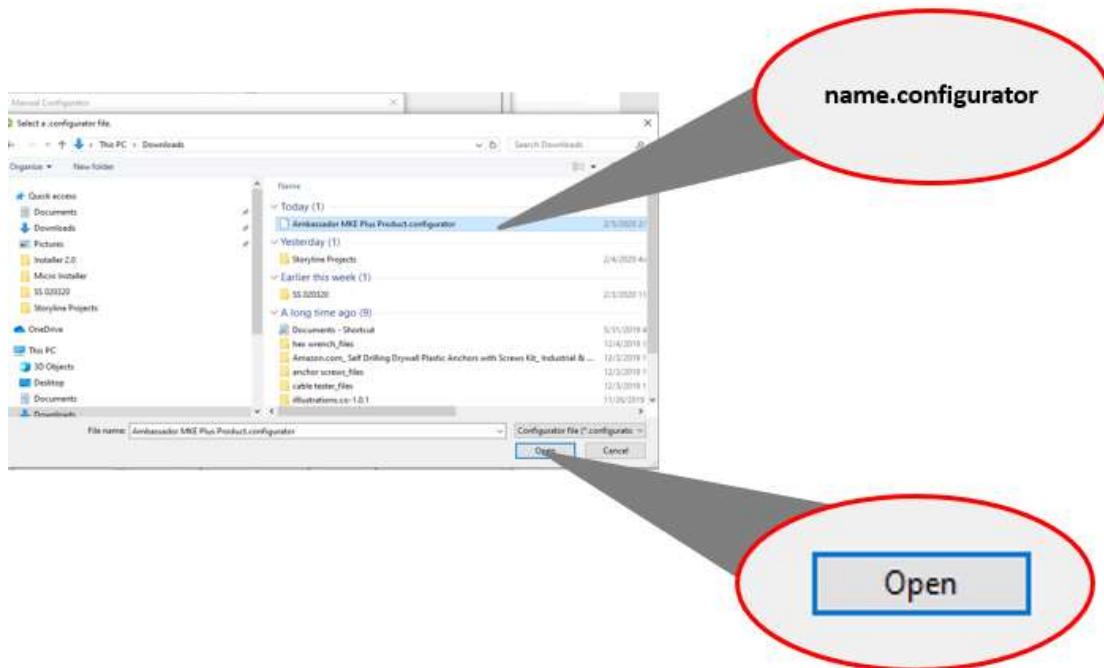


Figure 3

9. Click **Send** (Figure 4).

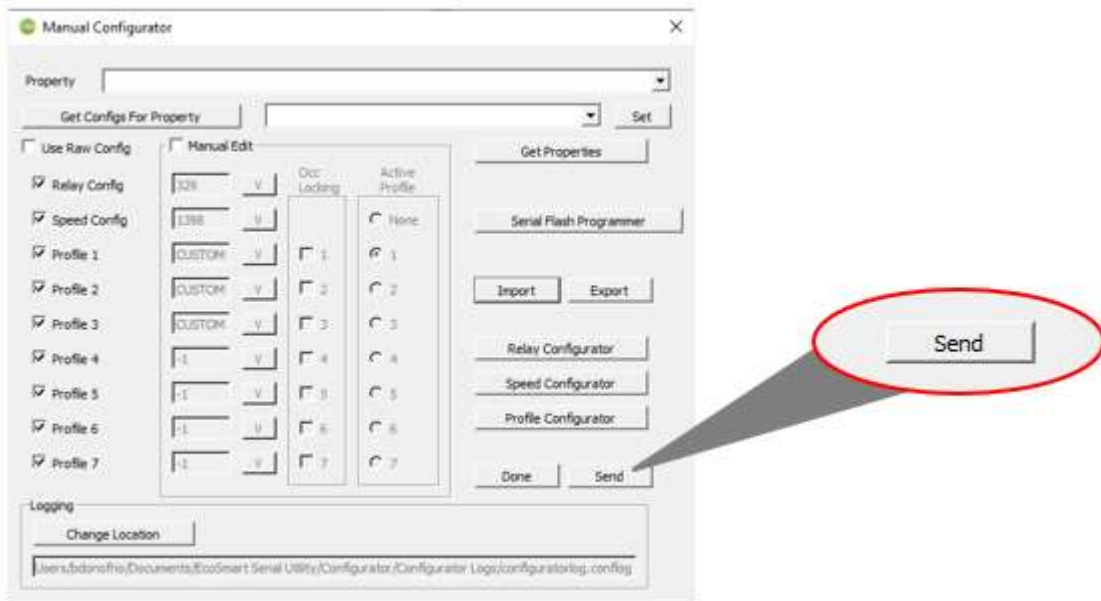


Figure 4

10. A pop up will appear, "Setting Configuration Successful". Click **OK**.
11. Disconnect the thermostat.

Create Configurator File

You will create this file one time, and then load this file to every room automation controller (thermostat) on the property.

Steps

At this point, your laptop does not have to be connected to a thermostat.

1. Open ESU
2. Navigate to the **Profiles** tab.
3. Select the **Manual Configurator** button (Figure 5).

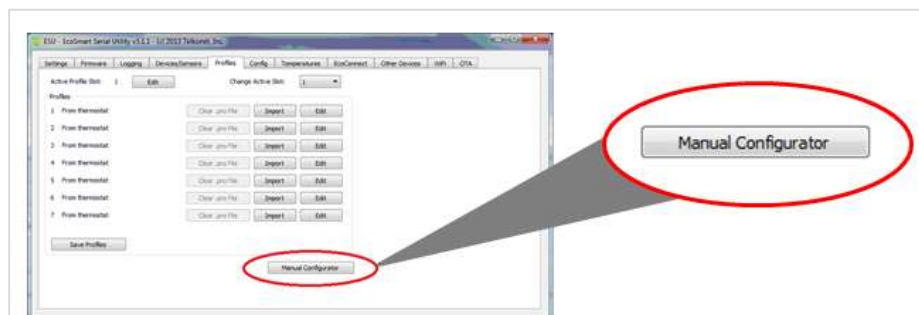


Figure 5

- Click the **Relay Configurator** button (Figure 6).

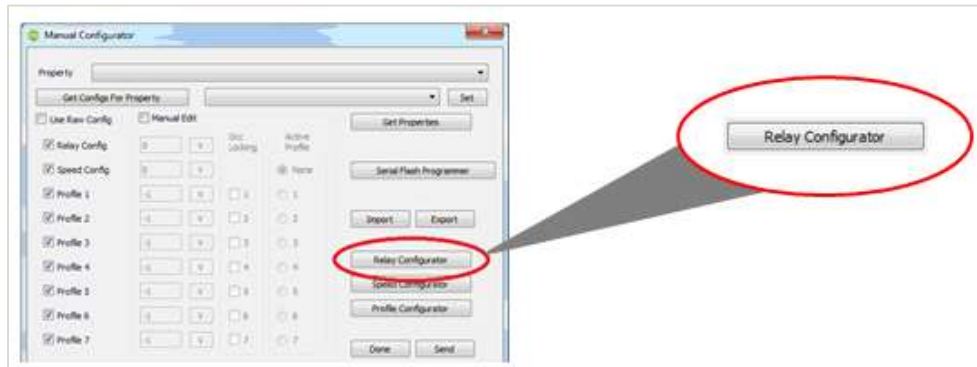


Figure 6

- Check the **Fancoil** box (Figure 7).
- In the **Fan Speeds** field, select 3.
- In the **Cool Valve** field, select *Normally Open*.
- In the **Heat Valve** field, select *Normally Open*.
- In the **Ventilation** field, select *N/A*.
- In the **Lanai** section, select *HVAC off*.
- Click the **Set Relay Config** button.

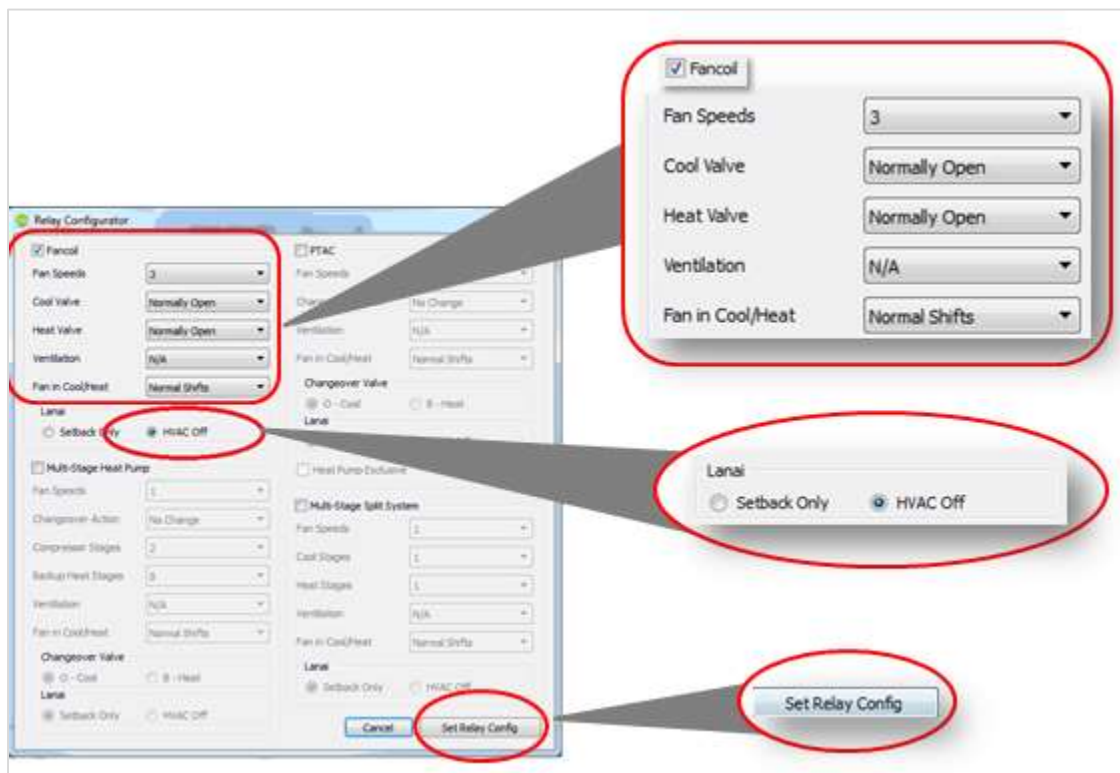


Figure 7

A value corresponding to the embedded relay configuration is now displayed (Figure 8).

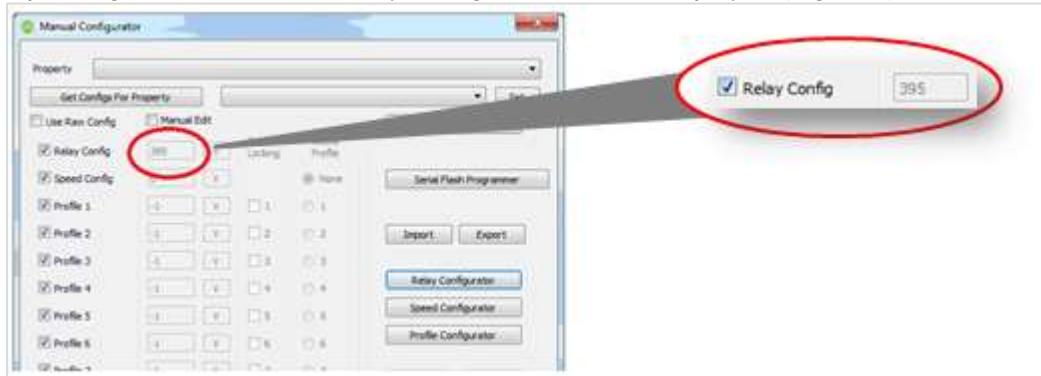



Figure 8

12. Next, click Speed Configurator (Figure 9).



Figure 9

13. Complete the fields on this screen according to how long an HVAC will run in each mode (Figure 10).

	FYI, although compressor-based systems must have a 3-minute delay, fan coils can switch with no delay.
-------------------------------------------------------------------------------------	--------------------------------------------------------------------------------------------------------

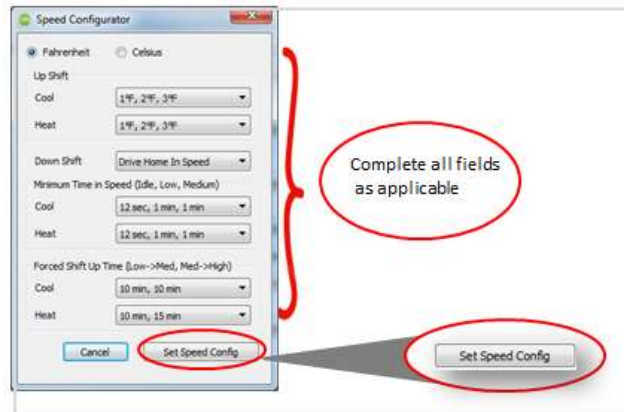


Figure 10

14. Click **Set Speed Config** to exit.

A value corresponding to the embedded speed configuration is now displayed in the Manual Configurator (Figure 11).



Figure 11

15. Next click the **Profile Configurator** button (Figure 12).

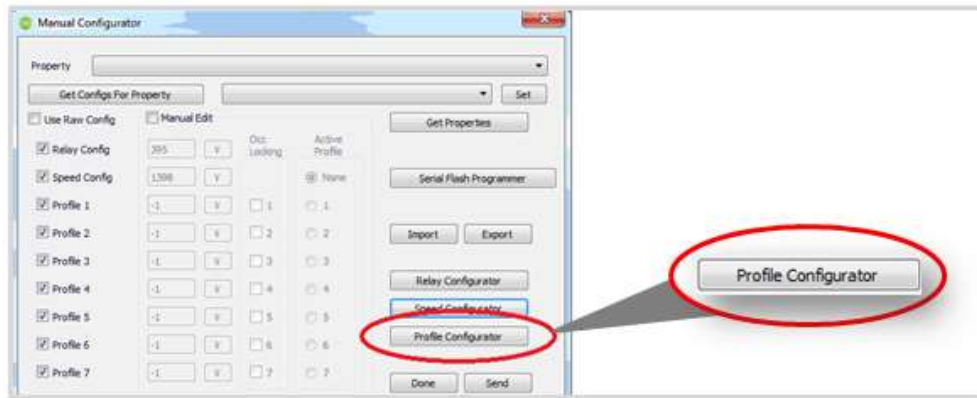


Figure 12

- On the profile configurator screen, select the button combination that corresponds to the buttons on the thermostat (Figure 13) for all three (or more) profile slots.

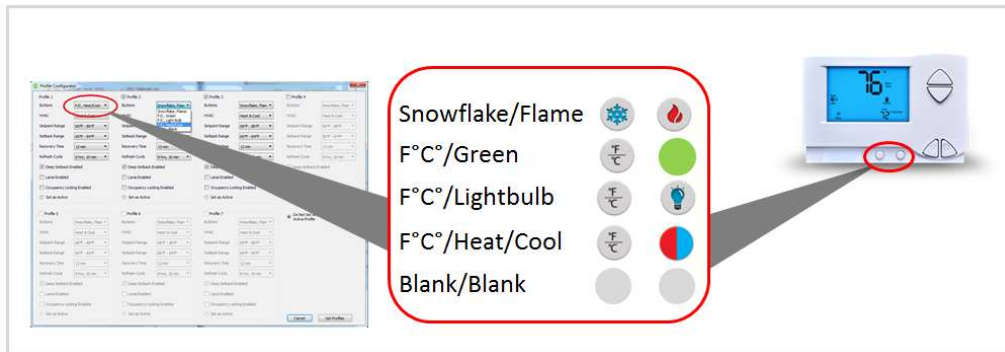



Figure 13

 Because you are using the manual configurator, *your choices cannot be subsequently switched out.*

- Select the HVAC mode: **Heat & Cool** (typical), **Heat Only** or **Cool Only** (Figure 14).

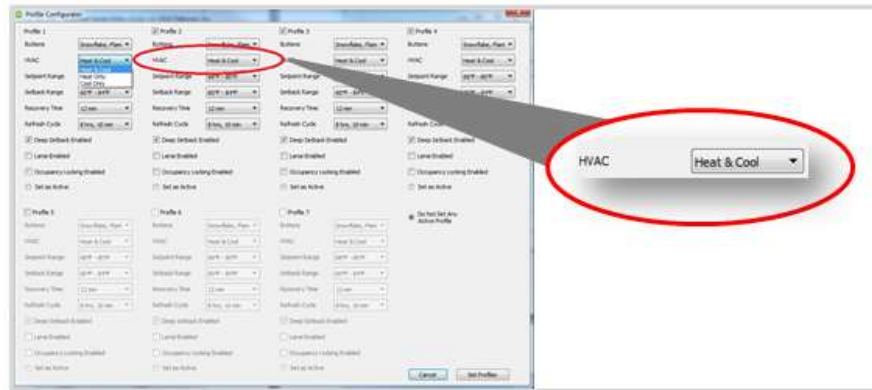


Figure 14

18. Set the **Setpoint Range** for each profile. The example below has a normal sold range, a narrower unsold range, and a wider VIP range (Figure 15).

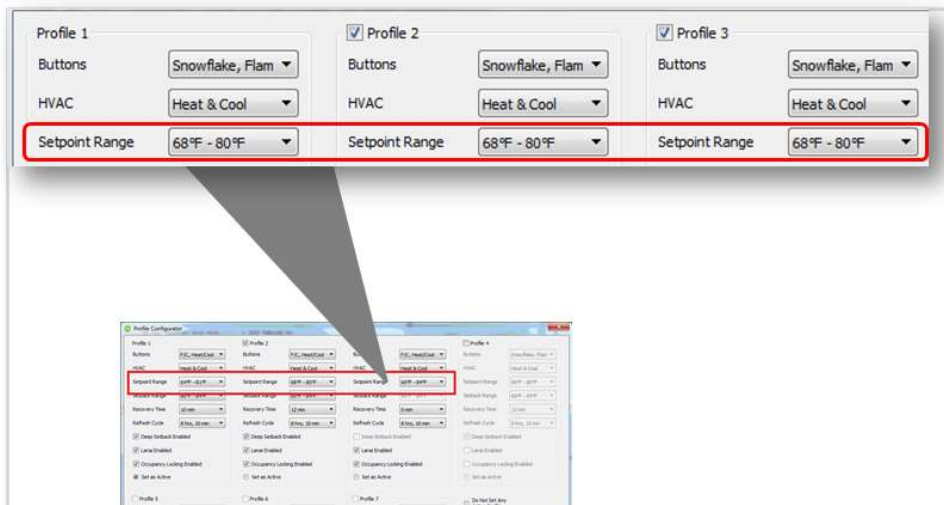


Figure 15

19. The setback range is the same for all three profiles, but the **Recovery Time** is longer for unsold, and turned off for VIP (Figure 16).

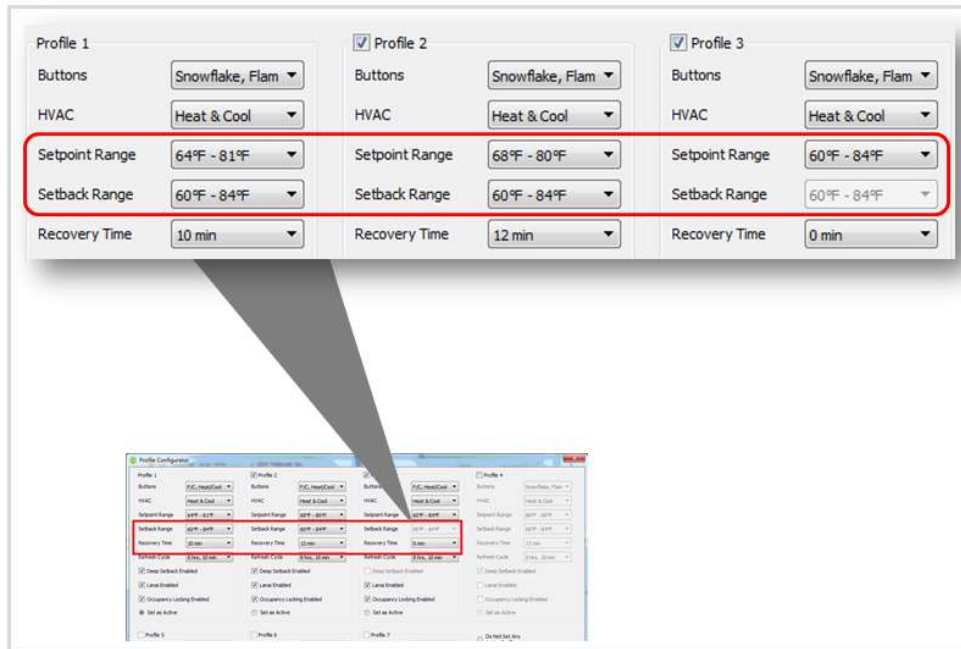




Figure 16

20. Set the Refresh Cycle for controlling humidity (Figure 17).



A more frequent cycle should be used in more humid climates (e.g. 8 minutes in Florida), a less frequent cycle for dry climates (e.g. 12 minutes in Las Vegas).



This does not require the thermostat with humidity sensing.



Figure 17

21. Since we are turning off the HVAC when the patio door is opened, make sure Lanai is checked for all profiles (Figure 18).



Figure 18

22. Check the **Occupancy Locking Enabled** box for any profile that requires it (Figure 19).



Figure 19

23. Check the **Set as Active** button in Profile #1 (Figure 20).



It is important to select Profile #1 as the Active profile. If not, the thermostat may misbehave when first turned on (e.g. the buttons and settings may be incorrect).

24. Click **Set Profiles**.

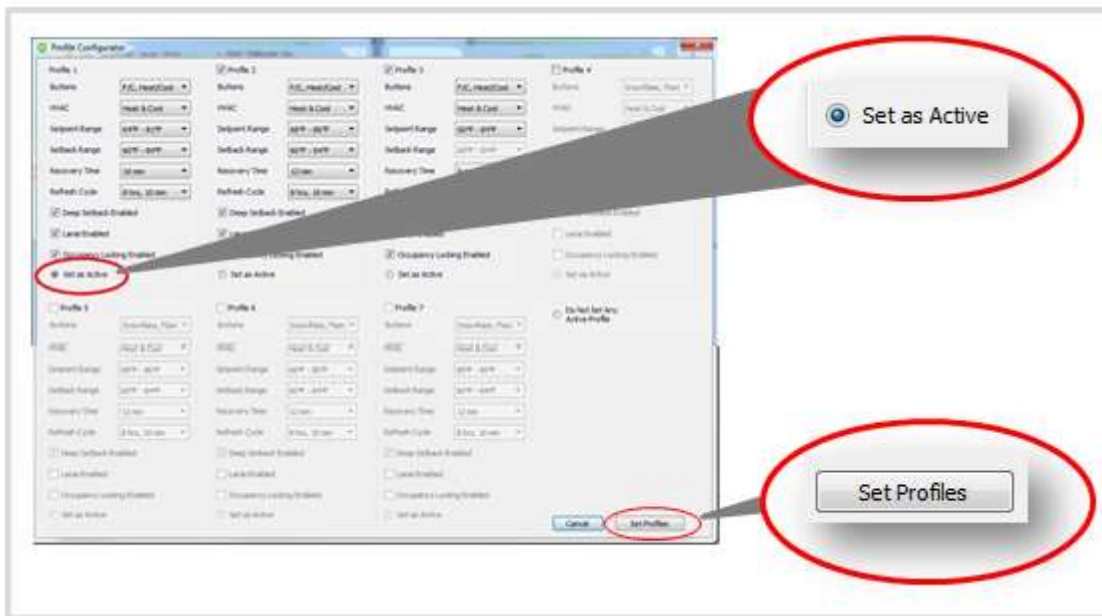


Figure 20

25. In the Manual Configurator dialog box, make note of the Profile codes (Figure 21).

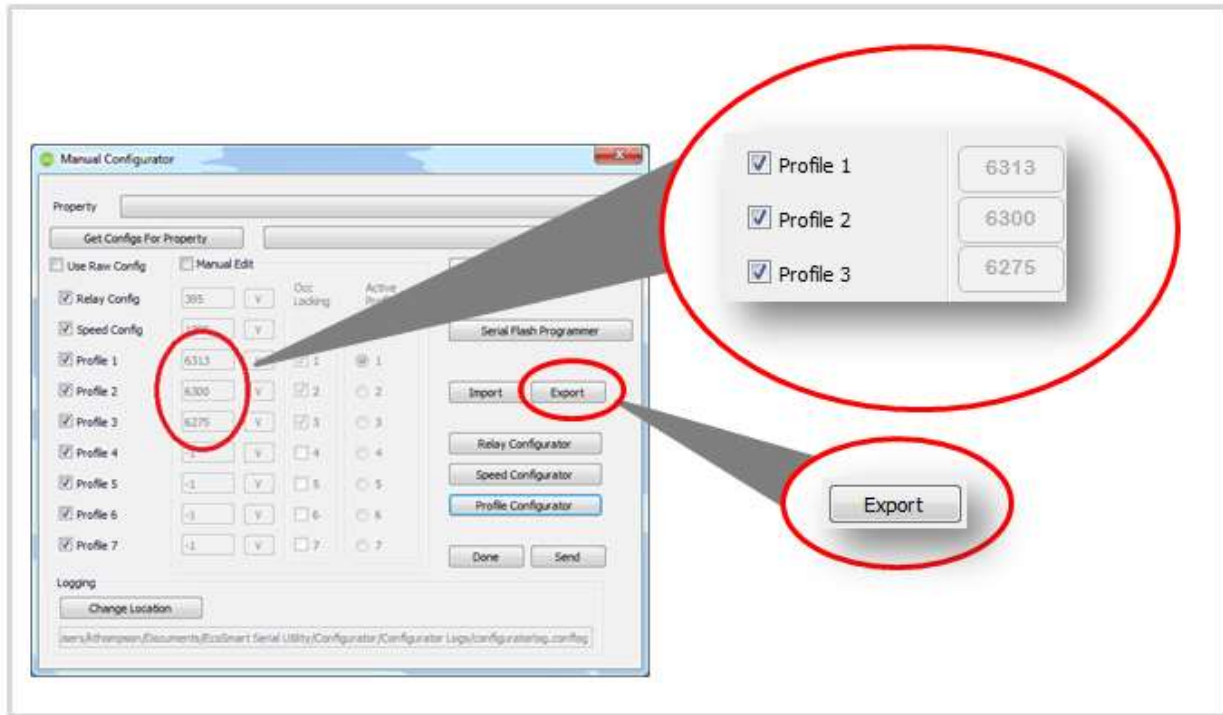


Figure 21



You may need these codes when configuring the thermostats, depending on which loading process you will follow.

26. Click the **Export** button.

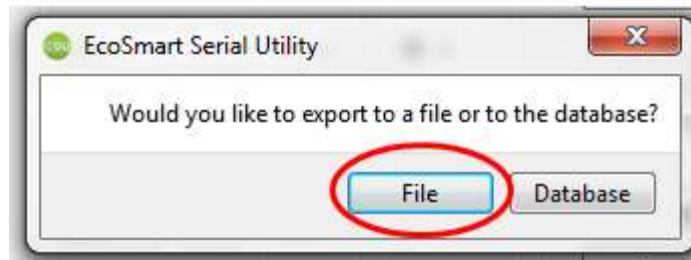


Figure 22

27. In the dialog box, select **File** (Figure 22).

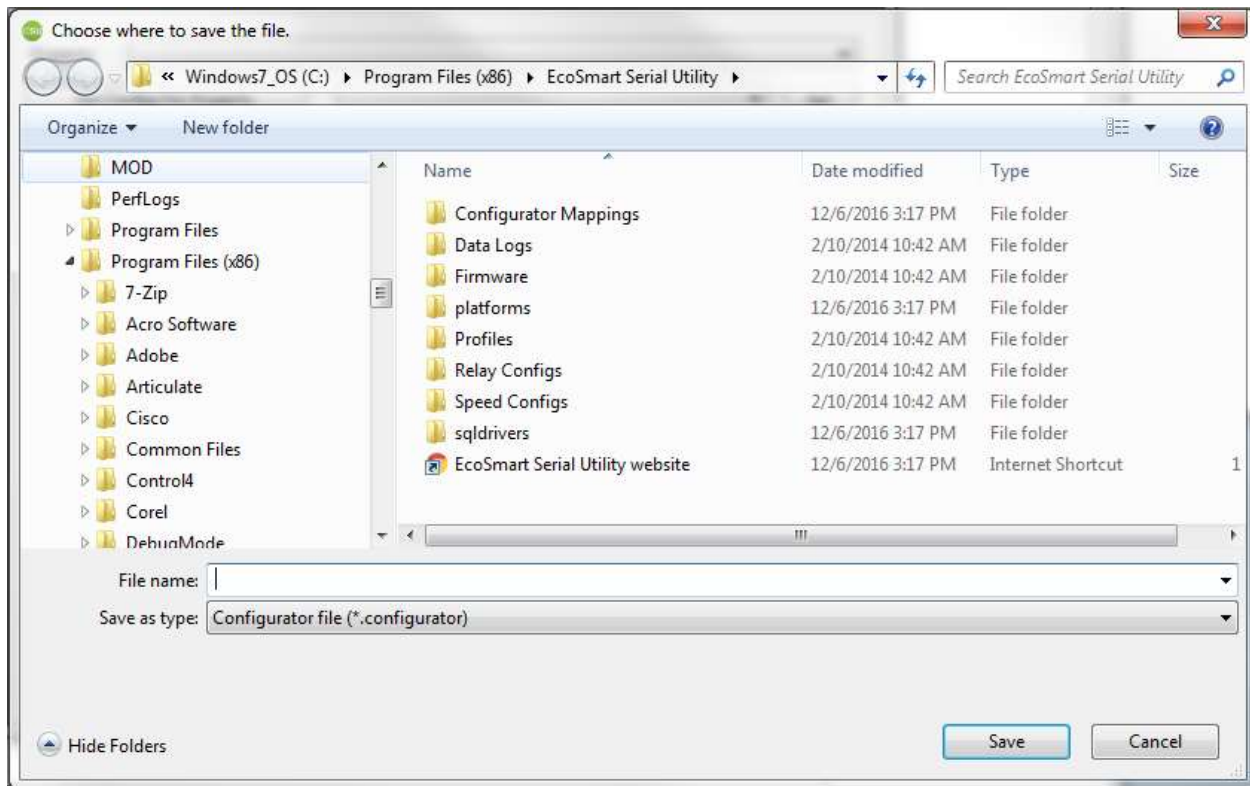



Figure 23

28. Save the file to the drive of your preference (Figure 23).

	<p>You will use this file to load your profiles on to all of your thermostats. Remember which file you stored it in. Share this file with others who are installing thermostats in the same project.</p>
-------------------------------------------------------------------------------------	-----------------------------------------------------------------------------------------------------------------------------------------------------------------------------------------------------------------

Test Your Profile Setup File

29. Connect a thermostat to ESU using the EcoSmart data cable.
30. Navigate to Profiles > Manual Configurator Import > Send.
31. Select the file you just saved.
32. Click Send.

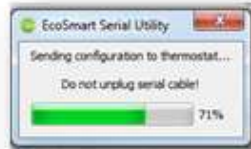
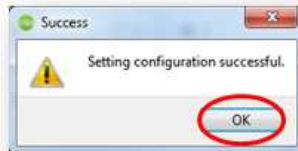


Figure 24



33. When successful, click OK.

Figure 25

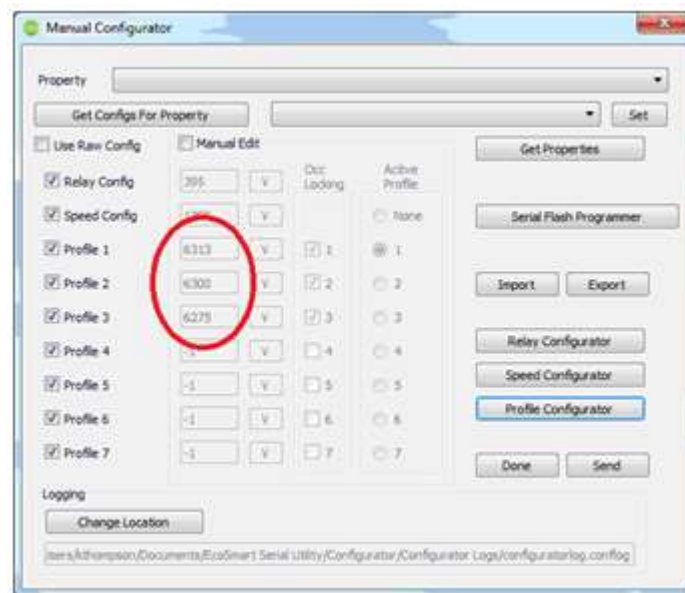


Figure 26

34. Verify the profile codes are correct.

Configuration is complete.

What's Next

1. Create or obtain the configurator file in one of two ways:
 - a. Enter the configurator "codes" in the Manual Configurator screen, or
 - b. Import a previously created configurator file, then:
2. Load the.configurator file on every thermostat by hitting "Send"